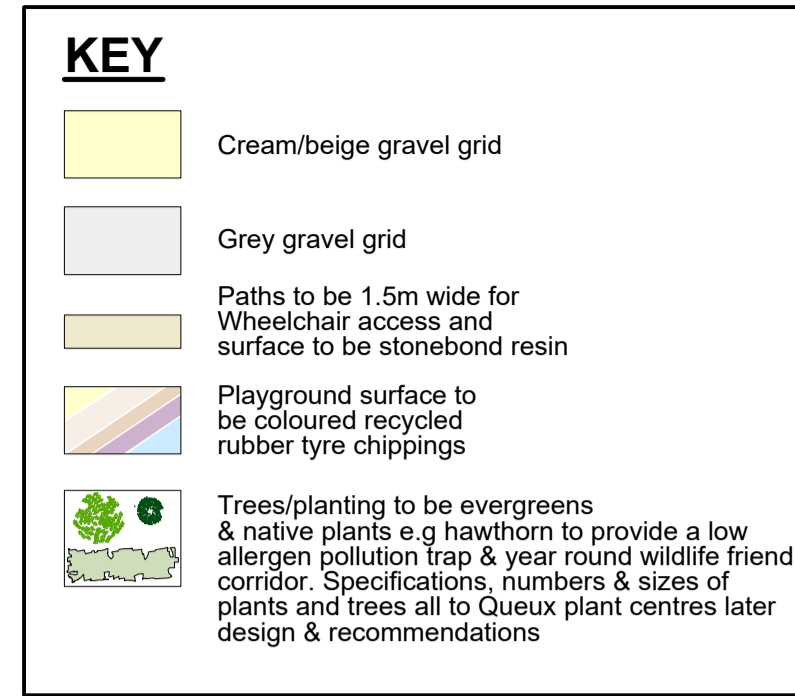


Gridforce with gravel fill
 Sand on Geotextile membrane
 Crushed and compacted Hardcore
 Geogrid mesh on Soil sub-base

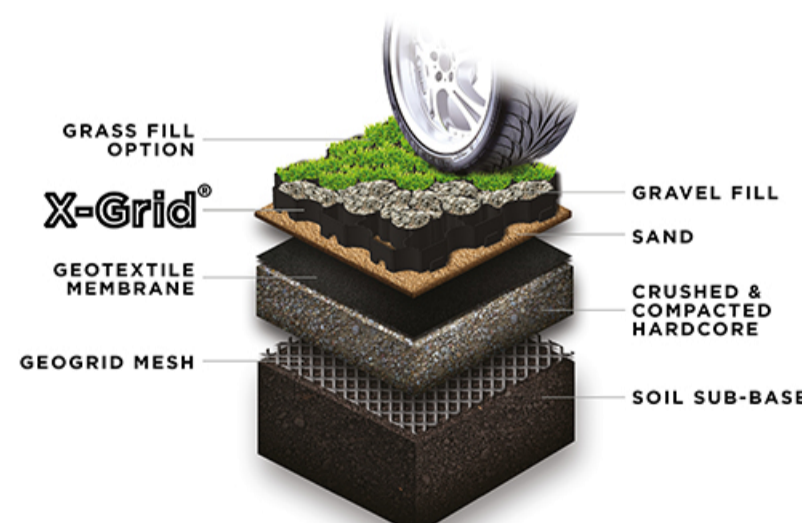
Grid gravel detail Scale 1:10



Playground surface to be coloured eco rubber tyre chippings to be laid loosley over permeable membrane to provide a permeable surface for surface water drainage.



Stonebond resin paths (light beige/cream)



Gridforce to be GF40 or GF50 suitable for frequent /intensive vehicle use and heavy loads such as fire trucks and coaches. Grids to be filled with cream/beige gravel for the parking spaces and grey gravel for the drive. surface to remain permeable to minimise surface flooding all to gridforce detail.

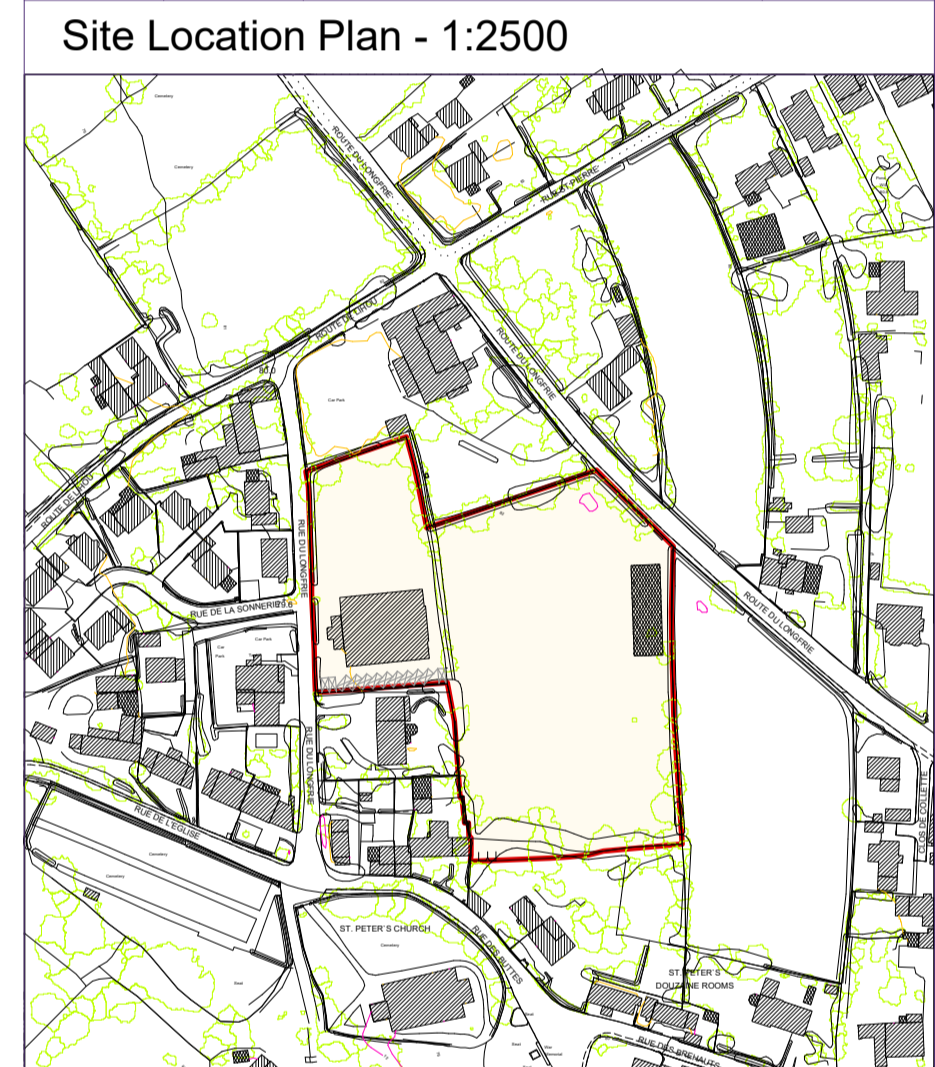


COPYRIGHT
 The copyright of this drawing is vested in the architects.

NOTES
 Any discrepancies found on this drawing must be reported to the architects immediately.
 Figured dimensions to be used in preference to scaled dimensions.
 Contractors must check all dimensions on site prior to commencement of work.

REVISIONS

No.	Date	Description	Drawn



TORODE
 ARCHITECTURE | CHARTERED SURVEYING
 david@torodearchitects.co.uk - 01481 251218

JOB	Change or use from agricultural land to community use at Styx western community St. Pierre du Bois Guernsey GY7 9RZ for Ms. S. Noyon & Mr. S. Langlois
Drawing	Design drawing - Blockplan
Scale	1:500
Date	Sept 2019
Signed	
Drawn	JT
Dwg. No.	6082 - 01K